

NBEE MAX

Scale Up Your Dental Production



Blazing Speed

Fastest printing **20 aligner models in just 9 minutes** with 170 μ m layers, delivering same-day results with ease.



High Volume Productivity

Delivers high-volume orthodontic production with up to **48 aligner models in a single run**, while supporting direct aligner printing for streamlined workflows and faster turnaround.



Unstoppable Throughput

Massive **23.7L** build volume designed for high-efficiency, batch production made for large dental labs.

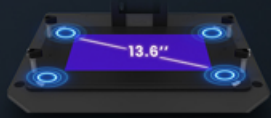


Total Flexibility

Compatible with a wide range of dental resins to support every workflow and expand possibilities.

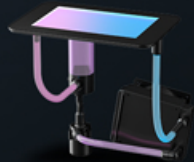
UNIZ NBEE MAX

Powering Large-Scale Dental Production with Unmatched Speed, Capacity, and Versatility.



Smart Precision Control

The advanced SSCS with force sensors and object detection ensures accurate printing mechanics. It safeguards every print with intelligent monitoring and real-time protection.



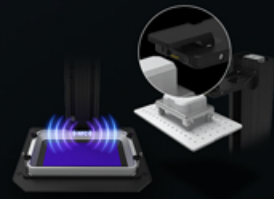
Efficient Cooling Performance

The liquid-cooled mask panel with intelligent control prevents overheating and maintains stable curing power. This guarantees consistent quality even in high-volume production.



Industrial-Grade Stability

Equipped with KK linear modules, ball screws, and servo motors, the system delivers exceptional rigidity and precision. Designed for durability, it supports long term, high-demand workflows.



Seamless Smart Recognition

The SIS automatically detects resin tanks and build platforms with NFC-enabled sensing. This streamlines setup, reduces errors, and ensures worry-free operation.

Technical Specifications

PERFORMANCE	Printing Technology	Masked Stereolithography (MSLA)
	Build Volume	298 × 166 × 480mm 11.7" × 6.5" × 18.8"
	Printing Screen	13.6" 7K
	XY Resolution	46µm
	Layer Thickness (Z Resolution)	10 - 200µm (25, 50, 100µm recommended)
	Separation Mechanism	Patented Low Force Stereo Peeling Technology Micro - stereo Composite Peeling Structures Unit (MPS)
	Support	Uniz Smart Support Technology
	Printing Speed*	20 Aligner Models in 9 Minutes
HARDWARE	Dimension / Weight	500 × 1540 × 480 mm [W×H×D] 19.7" × 60.6" × 18.9" 70KG / 154LB
	Operating Temperature	18 - 28°C (64 - 82°F) 30% - 70%RH
	Power Requirement	110V 6A / 220V 3A 60 Hz / 50 Hz
	Light Source	Matrix LED UV Light Tech
	Mechanics	Cast Aluminium & CNC, Sheet Metal
	Connectivity	USB Flash Drive, Wi - Fi, Ethernet
	Control Pannel	7" Touch Screen

* Aligner model, 170µm layer thickness.